



Water



Desalination



Chemicals



Electronics



Oil/Gas



Air/Gas



Inks/Paints/ Coatings



Power



Coolants



Pulp & Paper

DSL SERIES

Dual Side Line

Single Bag Filter Housings

- Dual single bag housings, side in, bottom out configuration.
- Economic multi-purpose, ASME code and non-code designed housings.
- 150psig (10.3bar) @ 250°F(121.1°C) design pressure.
- Manufactured to accept single and multiple bag filters.
- Vessels available in carbon steel, stainless steel 304 or 316.
- Available in swing bolt and v-band closures.
- For drawings, flow charts, custom applications and filter cartridge information please

Fischer-Robertson, Inc.
3890 Symmes Road, Hamilton, OH 45015
Ph 513-860-3445 Fx 513-860-4744
www.fischer-robertson.com

DSL SERIES

Side Line Bag Filter Housing
Dual
ASME Design/Industrial Design
Universal

Housing Specifications

Inlet/Outlet
2" Flange - 4" Flange
2" - 3" 150# NPT

Inlet/Outlet Connection Types
FNPT
Flange

Clean Drain
3/4" NPT

Vent
1/2" NPT

Gauges
1/2" NPT

Basket
1/8" on 3/16" perforated plate
*Other basket options available.

Certifications

U
UM
CE
NB
CRN

DSL SERIES

Fil-Trek's DSL series are ideal for use in industrial and commercial applications where flow rates vary between 220 and 850 GPM. Each model is available in carbon steel and stainless steel 304 and 316 and has a standard design pressure of 150psi (10 bar) @ 300°F.

Each model is standard with the following:

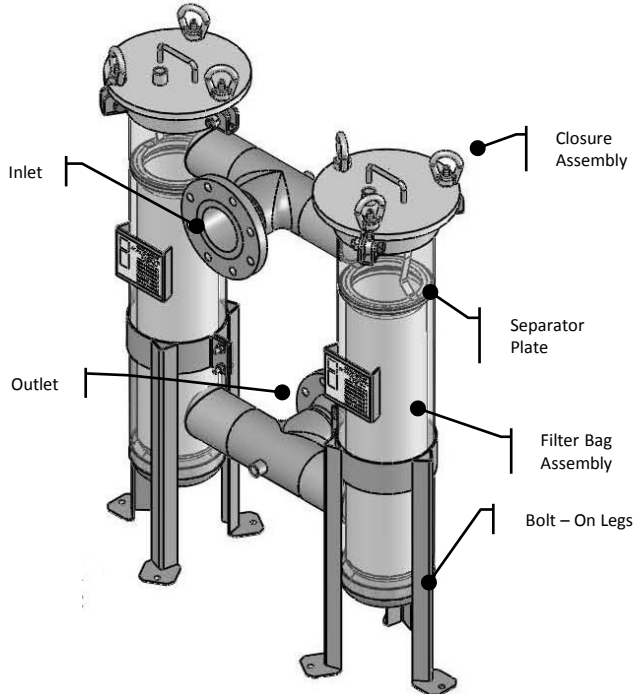
- Swing-bolt or v-band closure
- Bead blast finish
- Buna-N gasket
- 2 gauge ports
- Fully welded construction throughout
- Standard 1/8" on 3/16" perforated basket
- Adjustable carbon steel leg assembly



MODEL FLOW RATES

MODEL	BAG SIZE	FLOW RATE (GPM)
DSL211-2F	1	220
DSL211-3F	1	480
DSL211-4F	2	850
DSL212-2F	2	220
DSL212-3F	2	480
DSL212-4F	2	850

Flow rates are based on water at 2psid through empty housing with basket. Actual flow rate is dependant on fluid viscosity, micron rating, and media type. For actual flow rates based on your process, please contact Fil-Trek Corporation.



Fischer-Robertson, Inc.
3890 Symmes Road, Hamilton, OH 45015
Ph 513-860-3445 Fx 513-860-4744
www.fischer-robotson.com

MATERIAL OF CONSTRUCTION	MAX. OPERATING PRESSURE (PSI @250°F)	MAX. DESIGN TEMP
CARBON STEEL	150 psi (10.3bar)	300°F (150°C)
304 STAINLESS STEEL	150 psi (10.3bar)	300°F (150°C)
316 STAINLESS STEEL	150 psi (10.3bar)	300°F (150°C)

MODEL DIMENSIONAL DETAILS

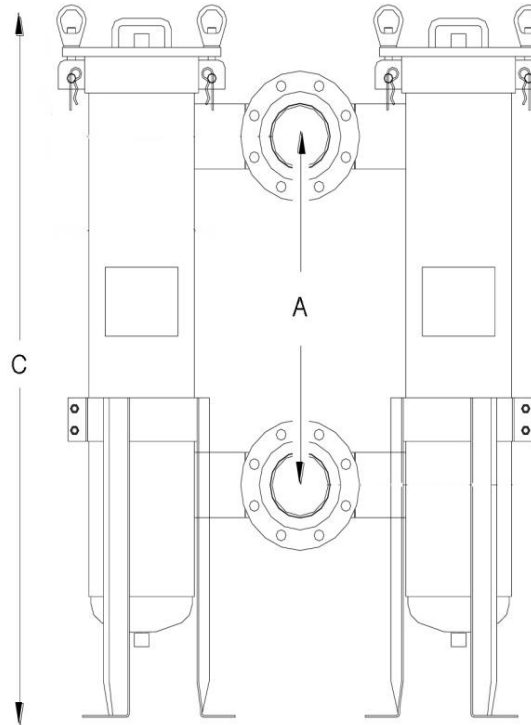
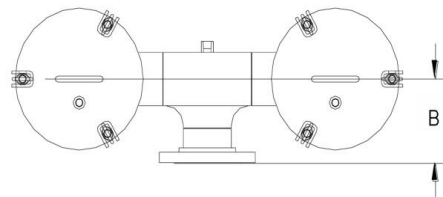
MODEL	WEIGHT (LBS)	A	B	C
DSL211-2F	170	21 1/8"	7 1/4"	37 9/16"
DSL211-3F	180	34 7/8"	7 1/4"	50 3/4"
DSL211-4F	190	21 1/8"	7 1/2"	37 9/16"
DSL212-2F	210	34 7/8"	7 1/2"	50 3/4"
DSL212-3F	220	21 1/8"	7 3/4"	37 9/16"
DSL212-4F	230	34 7/8"	7 3/4"	50 3/4"

REFERENCE CHART LEGEND

A	INLET TO OUTLET
B	CENTRE TO FACE
C	OVERALL LENGTH

Dimensions above are based on standard configuration 'C', side in-bottom out. Contact factory for weights and dimensions for all other model configurations

CONFIGURATION OPTIONS



*For more configuration options contact factory.

PRODUCT NOMENCLATURE

S4	DSL	2	12	3F	SW	A	-	-	-
MATERIAL	MODEL	# OF BASKETS	BASKET LENGTH	CONNECTION TYPE	CLOSURE STYLE	CONFIGURATION	BASKET	FINISH	O-RING
(-) CARBON	DSL ASME CODE	1	11 SIZE 1	2P 2" NPT (STD)	SW SWING BOLT	A (STD) SIDE IN/SIDE OUT	SEE SIDE PANEL FOR OPTIONS		
S4	EDSL		12 SIZE 2	2F 2" FLANGE	VB* V-BAND	C SIDE IN/BOTTOM OUT			
SS304	NON-CODE			3P 3" NPT		D SIDE IN/SIDE OUT SAME SIDE			
S6				3F 3" FLANGE					
SS316				4F 4" FLANGE					

*V-BAND ONLY AVAILABLE FOR ESL SERIES (NON-CODE)

NOTE: The DSL series in an ASME code stamped housing. This vessel is also available in an industrial non-code design.

For non-code, add the prefix "E" to the DSL in the part number.

HOUSING OPTIONS

Configuration Options

- A – Side in/side out (standard)
- C – Side in/Bottom out
- D – Side in/out Same Side

Basket Options

- (-) – 1/8" on 3/16" perforated basket (standard)
- MB__ - Mesh lined basket (insert mesh size in open space)

Finish Options

- (-) – External paint "National Blue" (Standard for carbon steel housings)
- (-) – Bead Blast (standard for stainless steel 304 and 316)
- EP1 – Electro polish Inside/Outside
- EP2 – Inside only
- EP3 – Outside only
- PP – Passivation

O-Ring Options

- (-) – Buna-N (standard)
- ED – EPDM
- VI – Viton
- SI – Silicone
- TEV – Teflon encapsulated Viton

Accessories

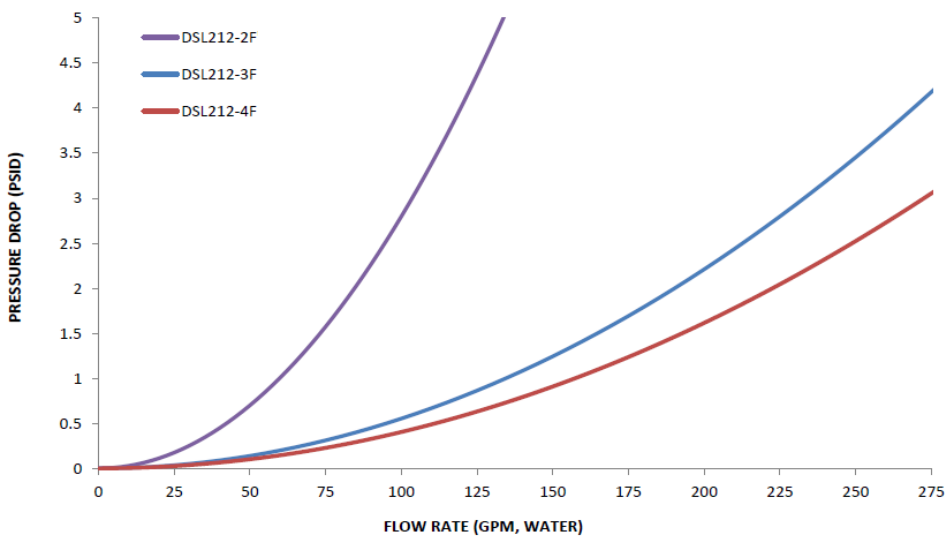
- Direct Reading Gauge
- DP Gauge
- Safety Relief Valves
- Vent Valves
- Drain Valves
- Air Eliminator
- Omega Springs
- Balloon/Liquid Displacer
- Bag Magnets

Fischer-Robertson, Inc.
3890 Symmes Road, Hamilton, OH 45015
Ph 513-860-3445 Fx 513-860-4744
www.fischer-robertson.com

DSL SERIES

Side Line Bag Filter Housing
Dual
ASME Design/Industrial Design
Universal

FLOW CHART



Fischer-Robertson, Inc.
3890 Symmes Road, Hamilton, OH 45015
Ph 513-860-3445 Fx 513-860-4744
www.fischer-robertson.com
